



Customer information packet

EM2513T-G

15HP, 1765RPM, 3PH, 60HZ, 254T, 3948M, OPSB, F1

Class - None

Division - Not Applicable

Specifications

| | |
|--------------------------------|--|
| Enclosure | OPSB |
| Frame | 254T |
| Frame Material | Steel |
| Frequency | 60.00 Hz |
| Motor Letter Type | Three Phase |
| Output @ Frequency | 15.000 HP @ 60 HZ |
| Phase | 3 |
| Synchronous Speed @ Frequency | 1800 RPM @ 60 HZ |
| Voltage @ Frequency | 460.0 V @ 60 HZ 230.0 V @ 60 HZ |
| XP Class and Group | None |
| XP Division | Not Applicable |
| Agency Approvals | NEMA PREMIUM NEMA_PREMIUM UR CSA EEV |
| Ambient Temperature | 40 °C |
| Auxillary Box | No Auxillary Box |
| Auxillary Box Lead Termination | None |
| Base Indicator | Rigid |
| Bearing Grease Type | Polyrex EM (-20F +300F) |
| Blower | None |
| Current @ Voltage | 36.000 A @ 230.0 V 38.000 A @ 208.0 V 18.000 A @ 460.0 V |
| Design Code | A |
| Drip Cover | No Drip Cover |
| Duty Rating | CONT |
| Efficiency @ 100% Load | 93.0 % |
| Electrically Isolated Bearing | Not Electrically Isolated |
| Feedback Device | NO FEEDBACK |
| Front Face Code | Standard |

Part detail

| | |
|--------------|------------|
| Revision | N |
| Type | AC |
| Mech. spec. | 39E366 |
| Base | |
| Status | PRD/A |
| Elec. spec. | 39WGY375 |
| Layout | 39LYE366 |
| Eff. date | 07-12-2023 |
| CD Diagram | CD0180 |
| Poles | 04 |
| Leads | 9#12 |
| Proprietary | False |
| Created date | 09-29-2017 |

| | |
|-------------------------------|-----------------------|
| Front Shaft Indicator | None |
| Heater Indicator | No Heater |
| High Voltage Full Load Amps | 18.0 a |
| Insulation Class | F |
| Inverter Code | Inverter Ready |
| KVA Code | G |
| Lifting Lugs | Standard Lifting Lugs |
| Locked Bearing Indicator | No Locked Bearing |
| Motor Lead Exit | Ko Box |
| Motor Lead Quantity/Wire Size | 9 @ 12 AWG |
| Motor Lead Termination | Flying Leads |
| Motor Standards | NEMA |
| Motor Type | 3948M |
| Mounting Arrangement | F1 |
| Number of Poles | 4 |
| Overall Length | 23.19 IN |
| Power Factor | 85 |
| Product Family | General Purpose |
| Pulley End Bearing Type | Ball |
| Pulley Face Code | Standard |
| Pulley Shaft Indicator | Standard |
| Rodent Screen | None |
| Service Factor | 1.15 |
| Shaft Diameter | 1.625 IN |
| Shaft Extension Location | Pulley End |
| Shaft Ground Indicator | Shaft Grounding |
| Shaft Rotation | Reversible |
| Shaft Slinger Indicator | No Slinger |
| Speed | 1765 rpm |
| Speed Code | Single Speed |
| Starting Method | Direct on line |
| Thermal Device - Bearing | None |
| Thermal Device - Winding | None |
| Vibration Sensor Indicator | No Vibration Sensor |

Winding Thermal 1

None

Winding Thermal 2

None

Nameplate

NP3553LUA

| | | | | | | |
|----------------------------------|---------------------------|-----------------------|------|------------|-----|----------------|
| CAT.NO. | EM2513T-G | | | | | |
| SPEC. | 39E366Y375G1 | | | | | |
| HP | 15 | | | | | |
| VOLTS | 230/460 | | | | | |
| AMPS | 36.4/18.2 | | | | | |
| RPM | 1770 | | | | | |
| FRAME | 254T | HZ | 60 | PH | 3 | |
| SF | 1.15 | CODE | J | DES | A | CLASS F |
| NEMA NOM. EFF | 93 | PF | 83 | | | |
| RATING | 40C AMB-CONT | | | | | |
| CC | 010A | USABLE AT 208V | | | N/A | |
| DE | 6309 | ODE | 6208 | | | |
| ENCL | OPSB | SN | | | | |
| VPWM INVERTER READY | | | | | | |
| CT30-60(2:1) VT3-60(20:1) | | | | | | |
| USABLE AT | 50HZ 15HP 190/380V 44/22A | | | | | SF1.0 |

AC Induction Motor Performance Data

Record # 93498

Typical performance - not guaranteed values

| Winding: 39WGY375-R001 | | Type: 3948M | Enclosure: OPSB | | |
|------------------------|--------------|---------------------|--|-----------------------|----------|
| Nameplate Data | | | 460 V, 60 Hz: High Voltage Connection | | |
| Rated Output (HP) | 15 | Full Load Torque | 44.57 LB-FT | | |
| Volts | 230/460 | Start Configuration | direct on line | | |
| Full Load Amps | 36/18 | Breakdown Torque | 171 LB-FT | | |
| R.P.M. | 1770 | Pull-up Torque | 79.1 LB-FT | | |
| Hz | 60 Phase | 3 | Locked-rotor Torque | 100 LB-FT | |
| NEMA Design Code | A | KVA Code | J | Starting Current | 137 A |
| Service Factor (S.F.) | 1.15 | | No-load Current | 7.62 A | |
| NEMA Nom. Eff. | 93 | Power Factor | 83 | Line-line Res. @ 25°C | 0.5794 Ω |
| Rating - Duty | 40C AMB-CONT | | Temp. Rise @ Rated Load | 29°C | |
| S.F. Amps | | | Temp. Rise @ S.F. Load | 35°C | |
| | | | Locked-rotor Power Factor | 32.8 | |

Load Characteristics 460 V, 60 Hz, 15 HP

| % of Rated Load | 25 | 50 | 75 | 100 | 125 | 150 | S.F. |
|-----------------|--------|------|--------|--------|--------|--------|------|
| Power Factor | 45 | 68 | 78 | 83 | 86 | 87 | 85 |
| Efficiency | 88.6 | 92.6 | 93.3 | 93.1 | 92.5 | 91.7 | 92.7 |
| Speed | 1794.2 | 1788 | 1781.2 | 1773.7 | 1766.3 | 1758.2 | 1769 |
| Line amperes | 8.77 | 11.2 | 14.5 | 18.2 | 22.1 | 26.4 | 20.5 |

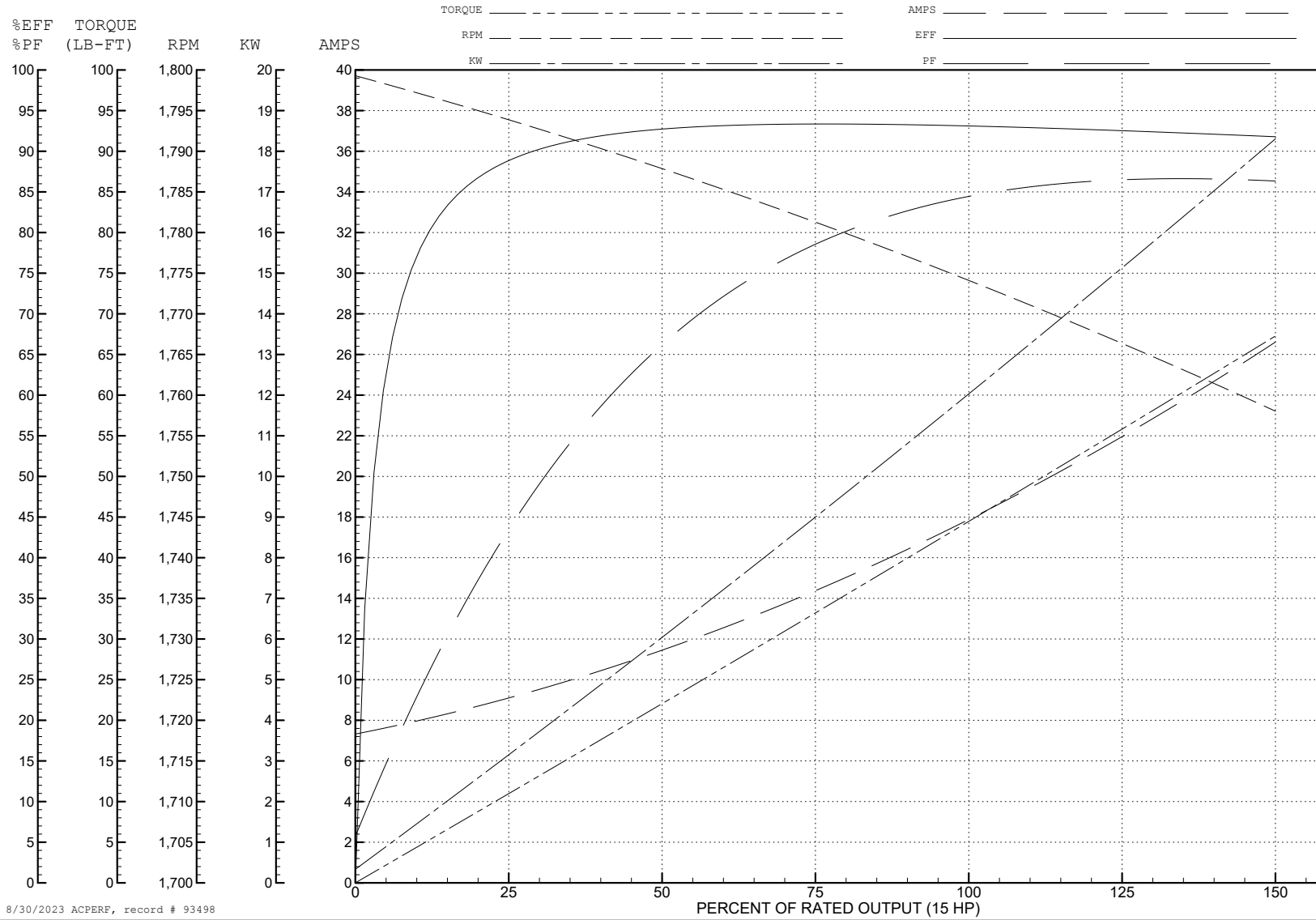
ABB Motors and Mechanical Inc.

WINDING # 39WGY375

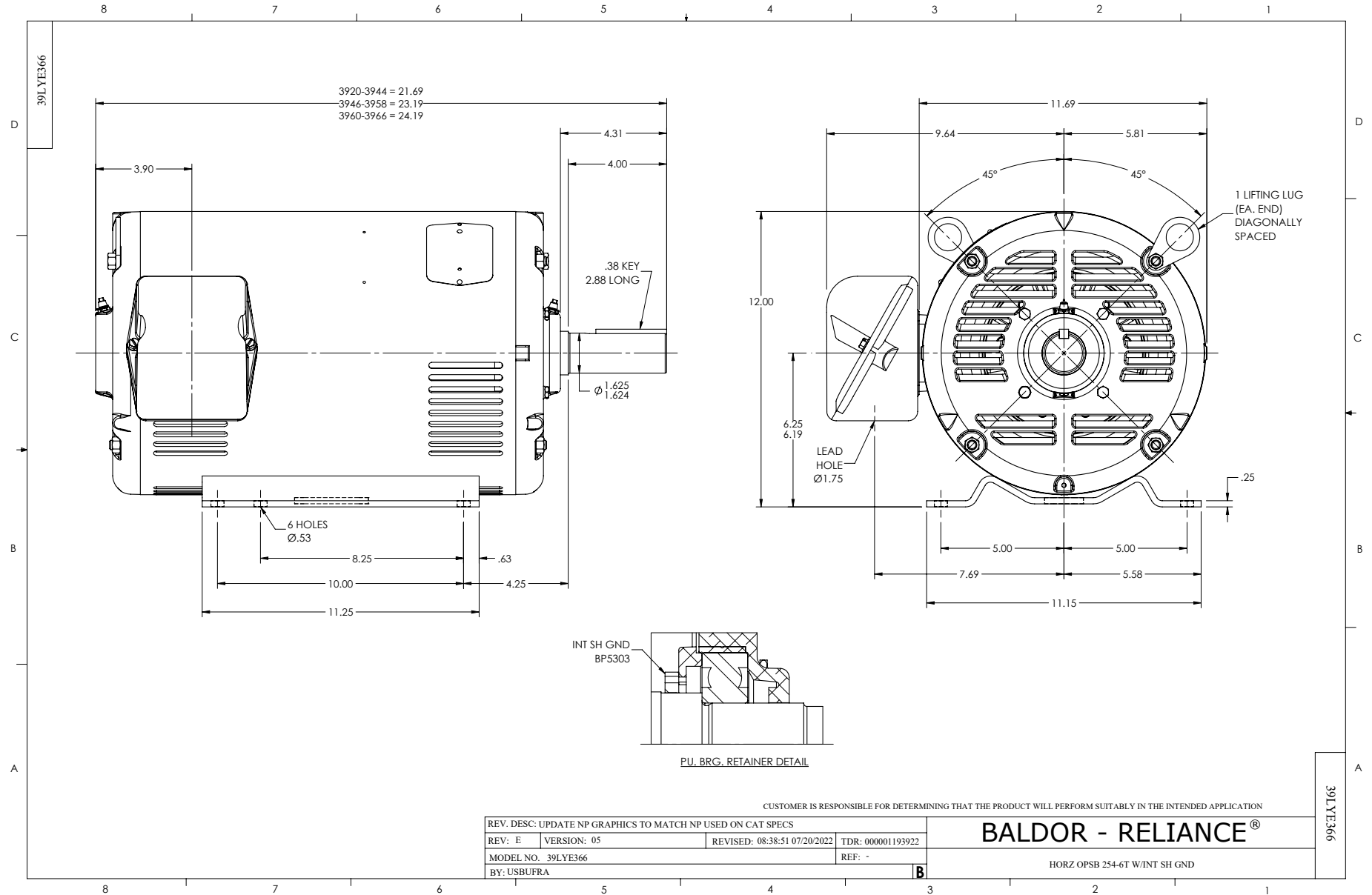
Typical performance - not guaranteed values.

15 HP 3 PH 60 HZ 1770 RPM 460 V 3948M

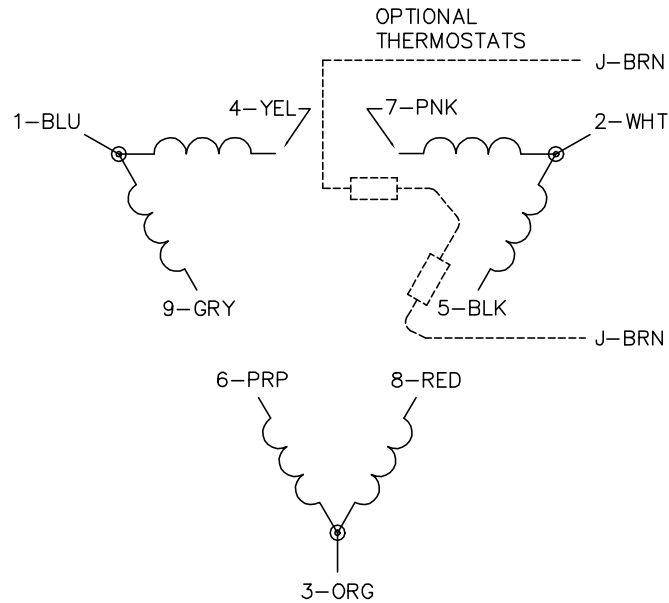
TORQUES (LB-FT): PO=171 PU=79.1 LR=100 LRA=137



8/30/2023 ACPERF, record # 93498



CD0180



LOW VOLTAGE
(2D)



HIGH VOLTAGE
(1D)



NOTES:

1. INTERCHANGE ANY TWO LINE LEADS TO REVERSE ROTATION.
2. OPTIONAL THERMOSTATS ARE PROVIDED WHEN SPECIFIED.
3. ACTUAL NUMBER OF INTERNAL PARALLEL CIRCUITS MAY BE A MULTIPLE OF THOSE SHOWN ABOVE.
4. LEAD COLORS ARE OPTIONAL. LEADS MUST ALWAYS BE NUMBERED AS SHOWN.

CD0180

| | | |
|-----------------------------------|--------------------------------|-------------------|
| REV. DESC: ADD CLASS CONN00000007 | | |
| REV. LTR: D | VERSION: 01 | TDR: 000001099922 |
| FILE: \AAA\00005\148 | REVISED: 10: 25: 29 02/19/2019 | BY: ENBRIRO |
| MTL: - | © □ | |

BALDOR - RELIANCE®

3PH, DV, 9 LEADS, DELTA CONNECTION

SH 1 of 1