



---

# Customer information packet

## EM3211T

3HP, 1760RPM, 3PH, 60HZ, 182T, 3630M, OPSB, F1

Class - None

Division - Not Applicable

## Specifications

Enclosure	OPSB
Frame	182T
Frame Material	Steel
Frequency	60.00 Hz
Motor Letter Type	Three Phase
Output @ Frequency	3.000 HP @ 60 HZ
Phase	3
Synchronous Speed @ Frequency	1800 RPM @ 60 HZ
Voltage @ Frequency	230.0 V @ 60 HZ
	460.0 V @ 60 HZ
XP Class and Group	None
XP Division	Not Applicable
Agency Approvals	CSA EEV
	CURUSEEV
	NEMA PREMIUM
	NEMA_PREMIUM
	UR
Ambient Temperature	40 °C
Auxillary Box	No Auxillary Box
Auxillary Box Lead Termination	None
Base Indicator	Rigid
Bearing Grease Type	Polyrex EM (-20F +300F)
Blower	None
Current @ Voltage	8.400 A @ 230.0 V
	8.500 A @ 208.0 V
	4.200 A @ 460.0 V
Design Code	B
Drip Cover	No Drip Cover
Duty Rating	CONT
Efficiency @ 100% Load	89.5 %
Electrically Isolated Bearing	Not Electrically Isolated
Feedback Device	NO FEEDBACK

## Part detail

Revision	S
Type	AC
Mech. spec.	36G548
Base	
Status	PRD/A
Elec. spec.	36WGS658
Layout	36LYG548
Eff. date	04-04-2019
CD Diagram	CD0005
Poles	04
Leads	9#16
Proprietary	False
Created date	01-14-2011

Front Face Code	Standard
Front Shaft Indicator	None
Heater Indicator	No Heater
High Voltage Full Load Amps	4.2 a
Insulation Class	F
Inverter Code	Inverter Ready
KVA Code	K
Lifting Lugs	Standard Lifting Lugs
Locked Bearing Indicator	No Locked Bearing
Motor Lead Exit	Ko Box
Motor Lead Quantity/Wire Size	9 @ 16 AWG
Motor Lead Termination	Flying Leads
Motor Standards	NEMA
Motor Type	3630M
Mounting Arrangement	F1
Number of Poles	4
Overall Length	15.00 IN
Power Factor	74
Product Family	General Purpose
Pulley End Bearing Type	Ball
Pulley Face Code	Standard
Pulley Shaft Indicator	Standard
Rodent Screen	None
Service Factor	1.15
Shaft Diameter	1.125 IN
Shaft Extension Location	Pulley End
Shaft Ground Indicator	No Shaft Grounding
Shaft Rotation	Reversible
Shaft Slinger Indicator	No Slinger
Speed	1765 rpm
Speed Code	Single Speed
Starting Method	Direct on line
Thermal Device - Bearing	None
Thermal Device - Winding	None

<b>Vibration Sensor Indicator</b>	<b>No Vibration Sensor</b>
<b>Winding Thermal 1</b>	<b>None</b>
<b>Winding Thermal 2</b>	<b>None</b>

**Nameplate**

**NP3553LUA**

<b>CAT.NO.</b>	EM3211T						
<b>SPEC.</b>	36G548S658G1						
<b>HP</b>	3						
<b>VOLTS</b>	230/460						
<b>AMPS</b>	8.4/4.2						
<b>RPM</b>	1765						
<b>FRAME</b>	182T	<b>HZ</b>	60	<b>PH</b>	3		
<b>SF</b>	1.15	<b>CODE</b>	K	<b>DES</b>	B	<b>CLASS</b>	F
<b>NEMA NOM. EFF</b>	89.5	<b>PF</b>	74				
<b>RATING</b>	40C AMB-CONT						
<b>CC</b>	010A	<b>USABLE AT 208V</b>			N/A		
<b>DE</b>	6206	<b>ODE</b>	6205				
<b>ENCL</b>	OPSB	<b>SN</b>					
<b>VPWM INVERTER READY</b>							
<b>CT30-60(2:1) VT3-60(20:1)</b>							
<b>USABLE AT</b>	50HZ 3HP 190/380V 8.6/4.3A						SF1.0

**Accessories**

<b>Part number</b>	<b>Description</b>	<b>Multiplier</b>
36-3403	C FACE KIT	A8
36EP1405A09SP	D-FLANGE KIT	A8

**AC Induction Motor Performance Data**

Record # 33604

Typical performance - not guaranteed values

<b>Winding: 36WGS658-R001</b>		<b>Type: 3630M</b>		<b>Enclosure: OPSB</b>	
<b>Nameplate Data</b>			<b>460 V, 60 Hz: High Voltage Connection</b>		
<b>Rated Output (HP)</b>		3	<b>Full Load Torque</b>		8.87 LB-FT
<b>Volts</b>		230/460	<b>Start Configuration</b>		direct on line
<b>Full Load Amps</b>		8.4/4.2	<b>Breakdown Torque</b>		37.4 LB-FT
<b>R.P.M.</b>		1765	<b>Pull-up Torque</b>		17.3 LB-FT
<b>Hz</b>	60 Phase	3	<b>Locked-rotor Torque</b>		21.2 LB-FT
<b>NEMA Design Code</b>	B KVA Code	K	<b>Starting Current</b>		32.3 A
<b>Service Factor (S.F.)</b>		1.15	<b>No-load Current</b>		2.43 A
<b>NEMA Nom. Eff.</b>	89.5 Power Factor	74	<b>Line-line Res. @ 25°C</b>		3.8716 Ω
<b>Rating - Duty</b>		40C AMB-CONT	<b>Temp. Rise @ Rated Load</b>		24°C
<b>S.F. Amps</b>			<b>Temp. Rise @ S.F. Load</b>		28°C
			<b>Locked-rotor Power Factor</b>		43
			<b>Rotor inertia</b>		0.279 LB-FT <sup>2</sup>

**Load Characteristics 460 V, 60 Hz, 3 HP**

<b>% of Rated Load</b>	<b>25</b>	<b>50</b>	<b>75</b>	<b>100</b>	<b>125</b>	<b>150</b>	<b>S.F.</b>
<b>Power Factor</b>	33	53	66	73	79	81	77
<b>Efficiency</b>	80.2	87.5	89.5	89.7	89.5	88.7	89.6
<b>Speed</b>	1791.1	1783	1774.5	1765.5	1755.7	1744.8	1760
<b>Line amperes</b>	2.6	2.99	3.54	4.25	4.97	5.83	4.68

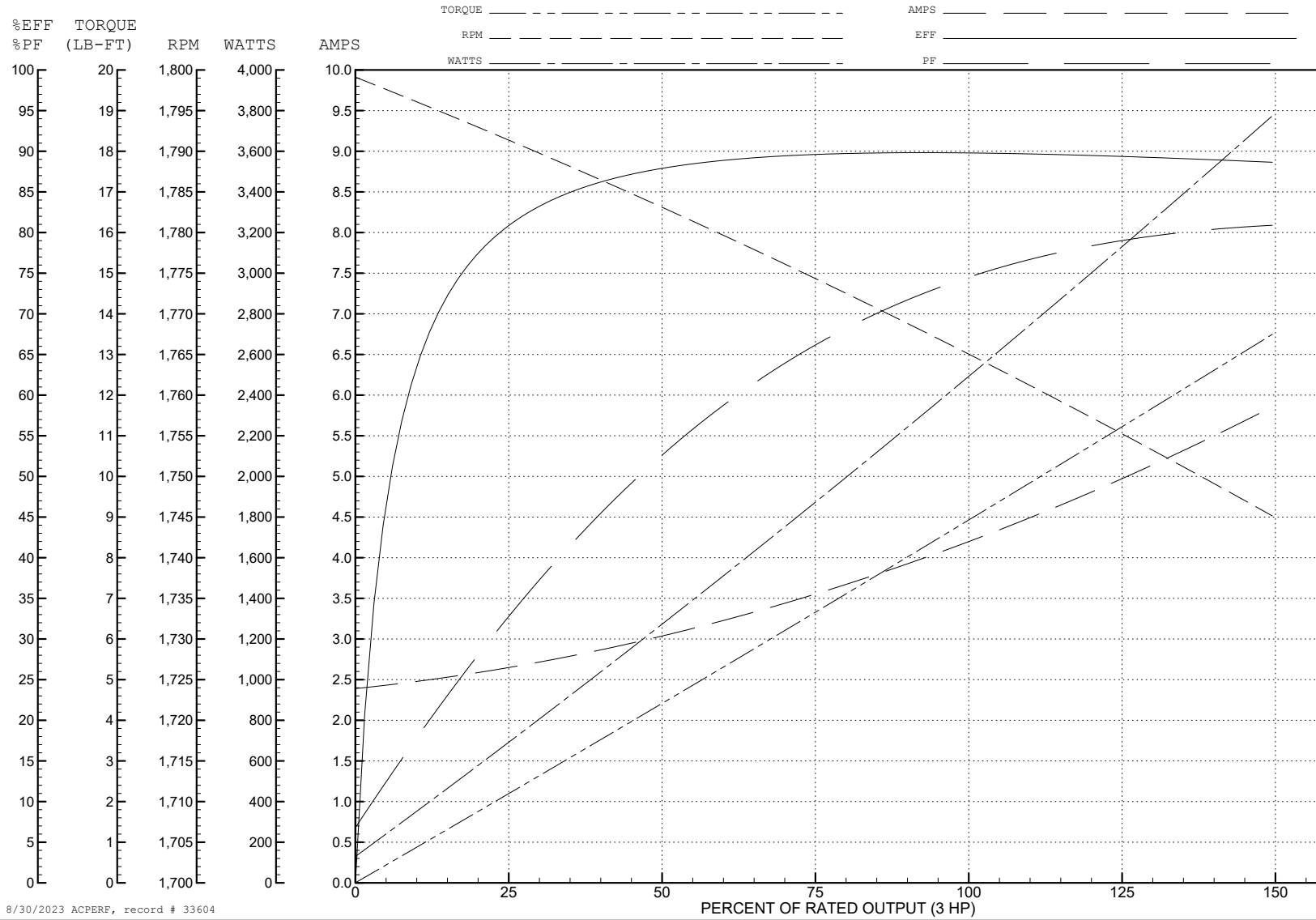
ABB Motors and Mechanical Inc.

WINDING # 36WGS658

3 HP 3 PH 60 HZ 1765 RPM 460 V 3630M

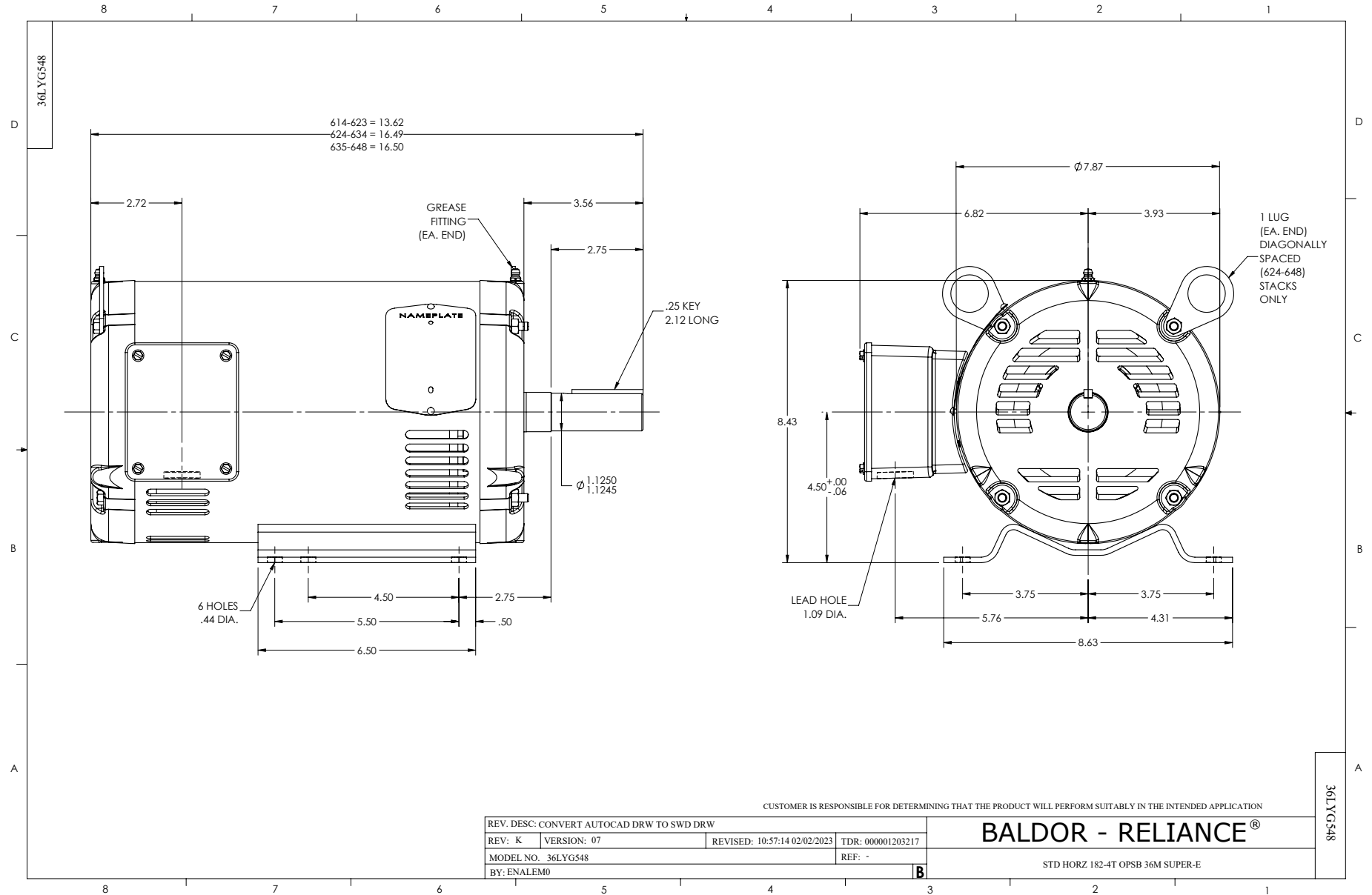
Typical performance - not guaranteed values.

TORQUES (LB-FT): PO=37.4 PU=17.3 LR=21.2 LRA=32.3



8/30/2023 ACPERF, record # 33604

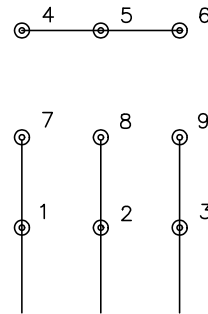




CD0005

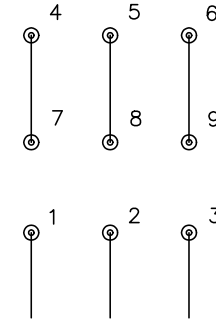


LOW VOLTAGE  
(2Y)



LINE

HIGH VOLTAGE  
(1Y)



LINE

**NOTES:**

1. INTERCHANGE ANY TWO LINE LEADS TO REVERSE ROTATION.
2. OPTIONAL THERMOSTATS ARE PROVIDED WHEN SPECIFIED.
3. ACTUAL NUMBER OF INTERNAL PARALLEL CIRCUITS MAY BE A MULTIPLE OF THOSE SHOWN ABOVE.
4. LEAD COLORS ARE OPTIONAL. LEADS MUST ALWAYS BE NUMBERED AS SHOWN.

CD0005

REV. DESC: REVISE TO SHOW OPTIONAL COLORS			
REV. LTR: E	BY: JLP	REVISED: 01/19/99 10:15	TDR: 0171435
S00000		FILE: AAA00005140	MDL: -
		MTL: -	

**BALDOR ELECTRIC Co.**

3PH, DV, 9 LEADS